

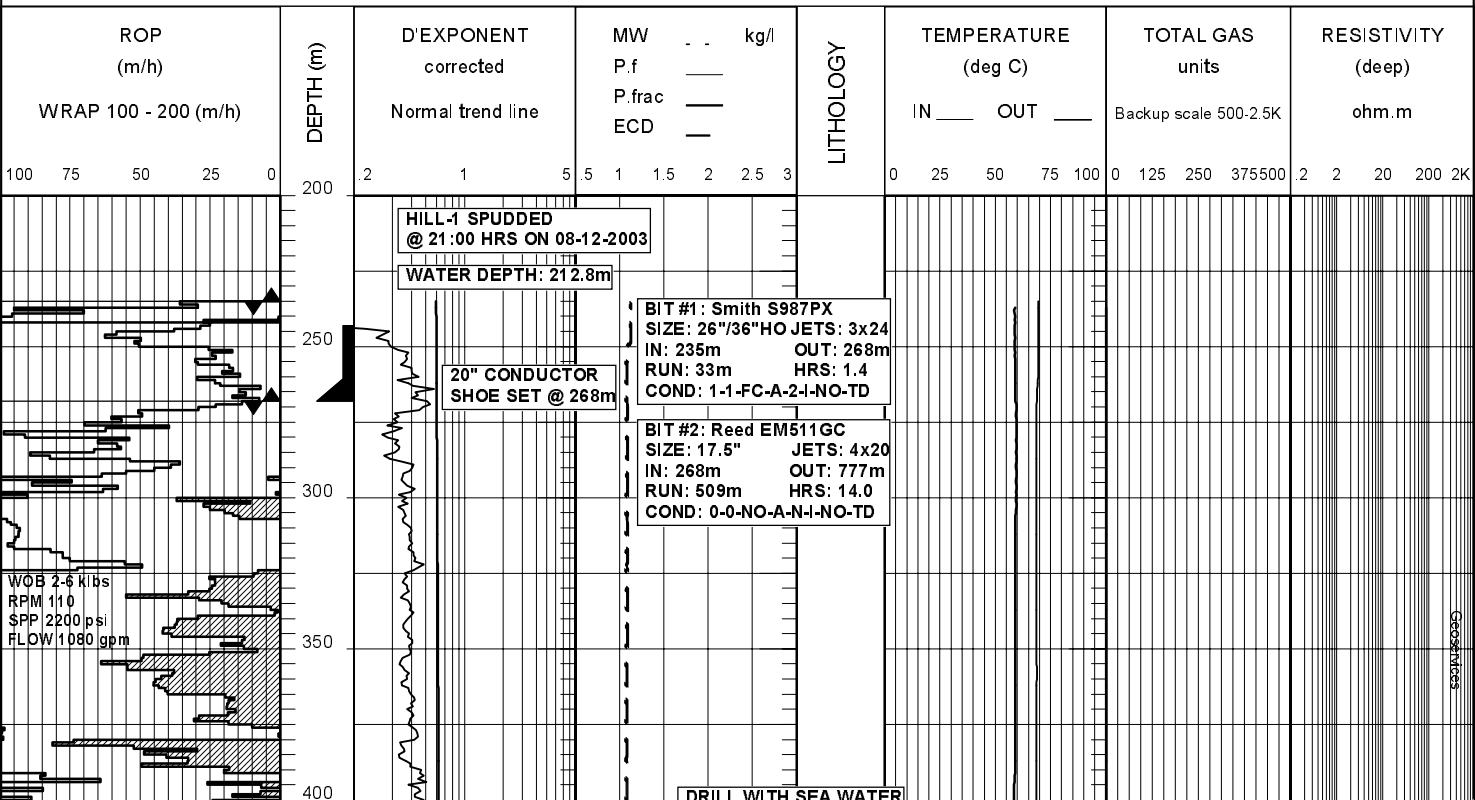
FROM (m): 235.0 TO (m): 2575.0 SCALE : 1/ 2500

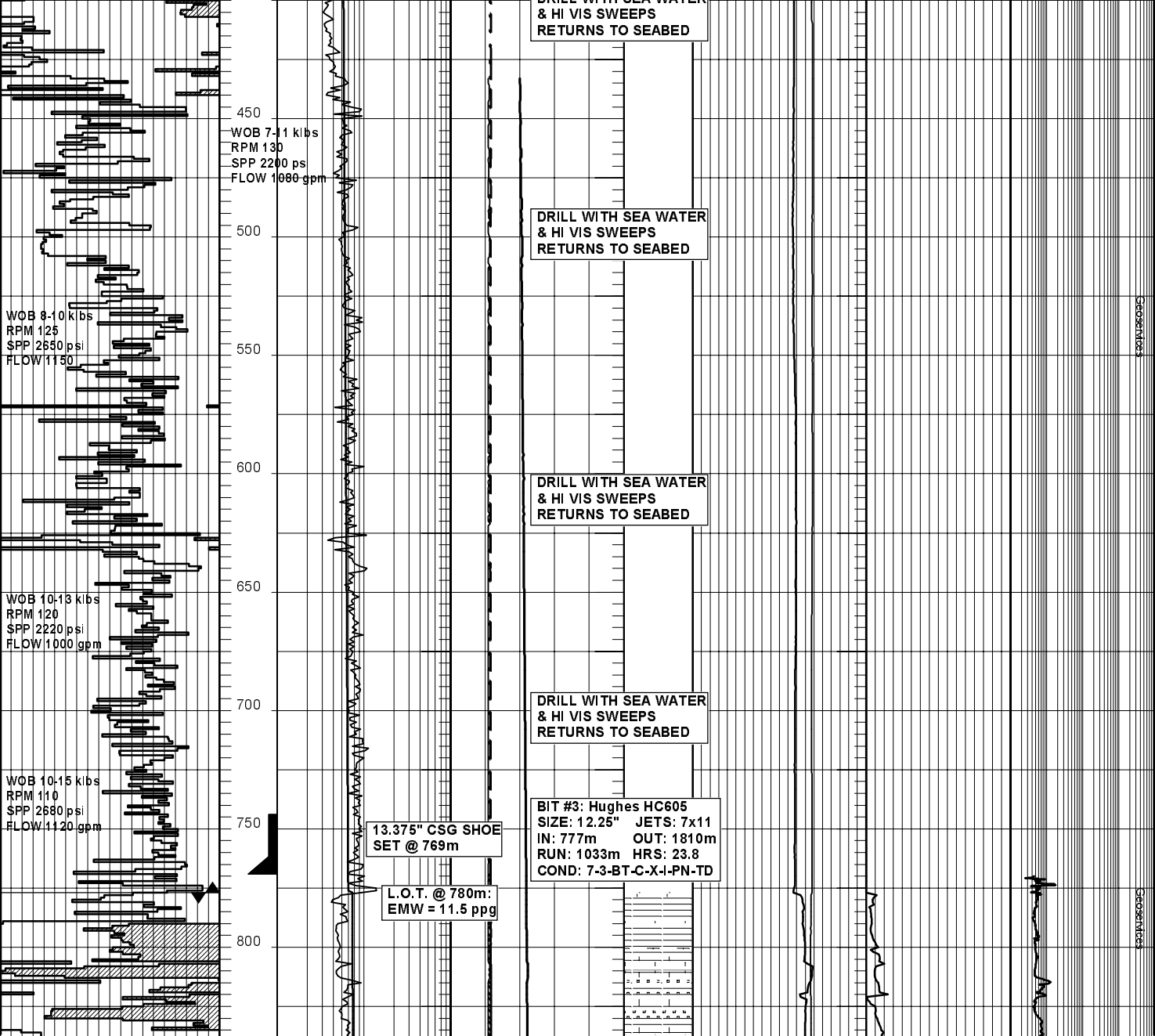
Well name : HILL-1 Latitude : 38° 48' 50.38" S Longitude : 141° 50' 39.58" E Rig Name : Ocean Epoch
 Company Name : Santos Limited Country : Australia Rig Type : Semi-Sub

RT-LAT (m): 22.4 Final TD- Drillers (m): 1810.0m Spud Date : 08-12-2003
 Water Depth (m): 212.8 Final TVD- Subsea (m): 2575.0m TD Date : 20-12-2003

Computed Method: Eaton Overburden law : Soft
 Trend Slopes : a = 0.0001034 b = -0.2086073
 Hydro. Gradient : 1.04 kg/l

Limestone
 Clay
 Med Sandstone
 Dolomite
 Coal
 Siltstone
 Calcareous
 Carb. Siltstone





DRILL WITH SEA WATER
& HI VIS SWEEPS
RETURNS TO SEABED

WOB 7-11 klbs
RPM 130
SPP 2200 ps
FLOW 1080 gpm

DRILL WITH SEA WATER
& HI VIS SWEEPS
RETURNS TO SEABED

WOB 8-10 klbs
RPM 125
SPP 2680 psi
FLOW 1150

DRILL WITH SEA WATER
& HI VIS SWEEPS
RETURNS TO SEABED

WOB 10-13 klbs
RPM 120
SPP 2220 psi
FLOW 1000 gpm

DRILL WITH SEA WATER
& HI VIS SWEEPS
RETURNS TO SEABED

WOB 10-15 klbs
RPM 110
SPP 2680 psi
FLOW 1120 gpm

BIT #3: Hughes HC605
SIZE: 12.25" JETS: 7x11
IN: 777m OUT: 1810m
RUN: 1033m HRS: 23.8
COND: 7-3-BT-C-X-I-PN-TD

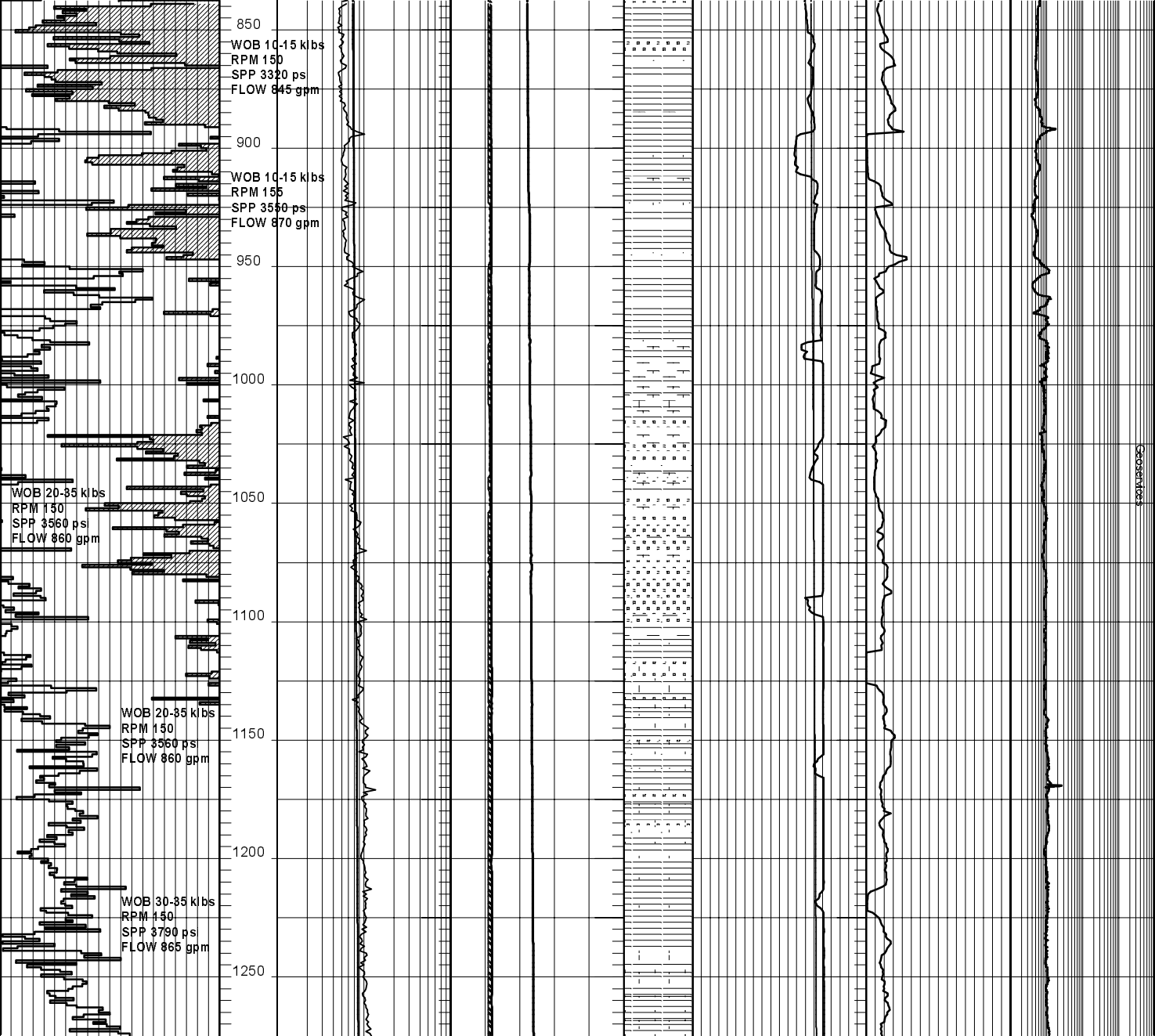
13.375" CSG SHOE
SET @ 769m

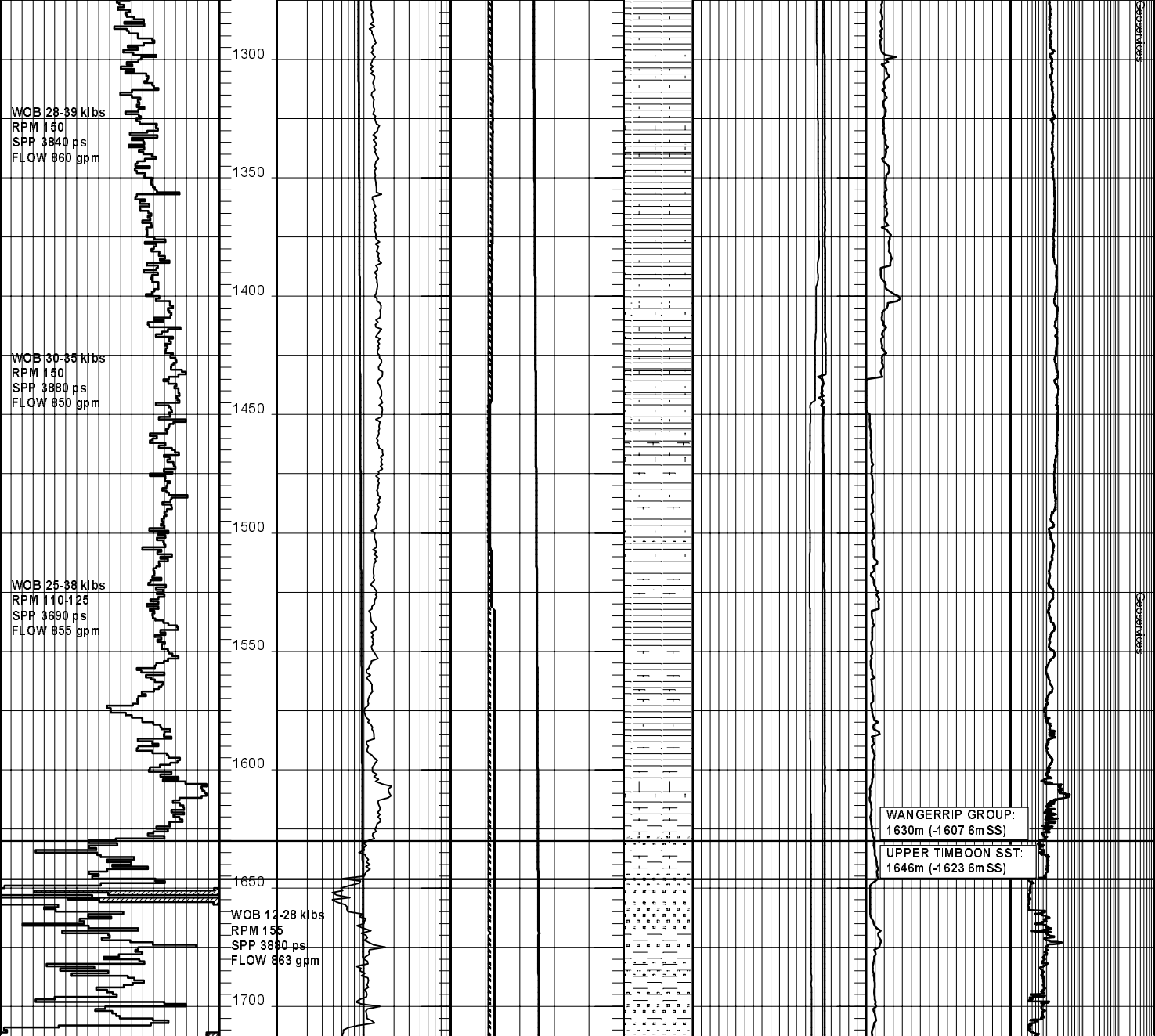
L.O.T. @ 780m:
EMW = 11.5 ppg

IN	OUT	COND
777	1810	7-3-BT-C-X-I-PN-TD

Secoservices

Secoservices





WOB 12-28 klbs
RPM 140
SPP 3840 ps
FLOW 840 gpm

1750

1800

1850

1900

1950

2000

2050

2100

2150

WOB 20-25 klbs
RPM 150
SPP 3500-3700 ps
FLOW 660 gpm

WOB 22-28 klbs
RPM 153
SPP 3745 ps
FLOW 655 gpm

WOB 18-28 klbs
RPM 167
SPP 3145 ps
FLOW 653 gpm

WOB 15-30 klbs
RPM 170
SPP 3200-3800 ps
FLOW 640-650 gpm

TIMBOON EQ. MUDST.
1767m (-1744.6mSS)

9.625" CASING SHOE
SET @ 1801.2m

BIT #4: Reed Hycalog
DSX104-HGN
SIZE: 8.5" JETS: 5x12
IN: 1810m OUT: 2575m
RUN: 765m HRS: 23.36
COND: 2.4-WT-T-
-X-I-BU-CT-TD

L.O.T. @ 1813m:
EMW = 10.5 ppg

UPPER PARRATTE FM:
1974m (-1951.6mSS)

CROSSLOGS

CROSSLOGS

LOWER PAARATTE FM:
2196m (-2173.6mSS)

2200

2250

2300

2350

2400

2450

2500

2550

WOB 25-33 klbs
RPM 175
SPP 3600-3800 psi
FLOW 650 gpm

WOB 30-37 klbs
RPM 175
SPP 3800-4000 psi
FLOW 630 gpm

WOB 30-37 klbs
RPM 175
SPP 3900-4150 psi
FLOW 630 gpm

HILL-1 REACHED TD
COURSE CH 10-10-2000

DRILLERS' DEPTH: 2575.0m

Geostatics

Geostatics

2600

@ 01:30 HRS ON 20-12-2003

LOGGERS' DEPTH: 2576.0m